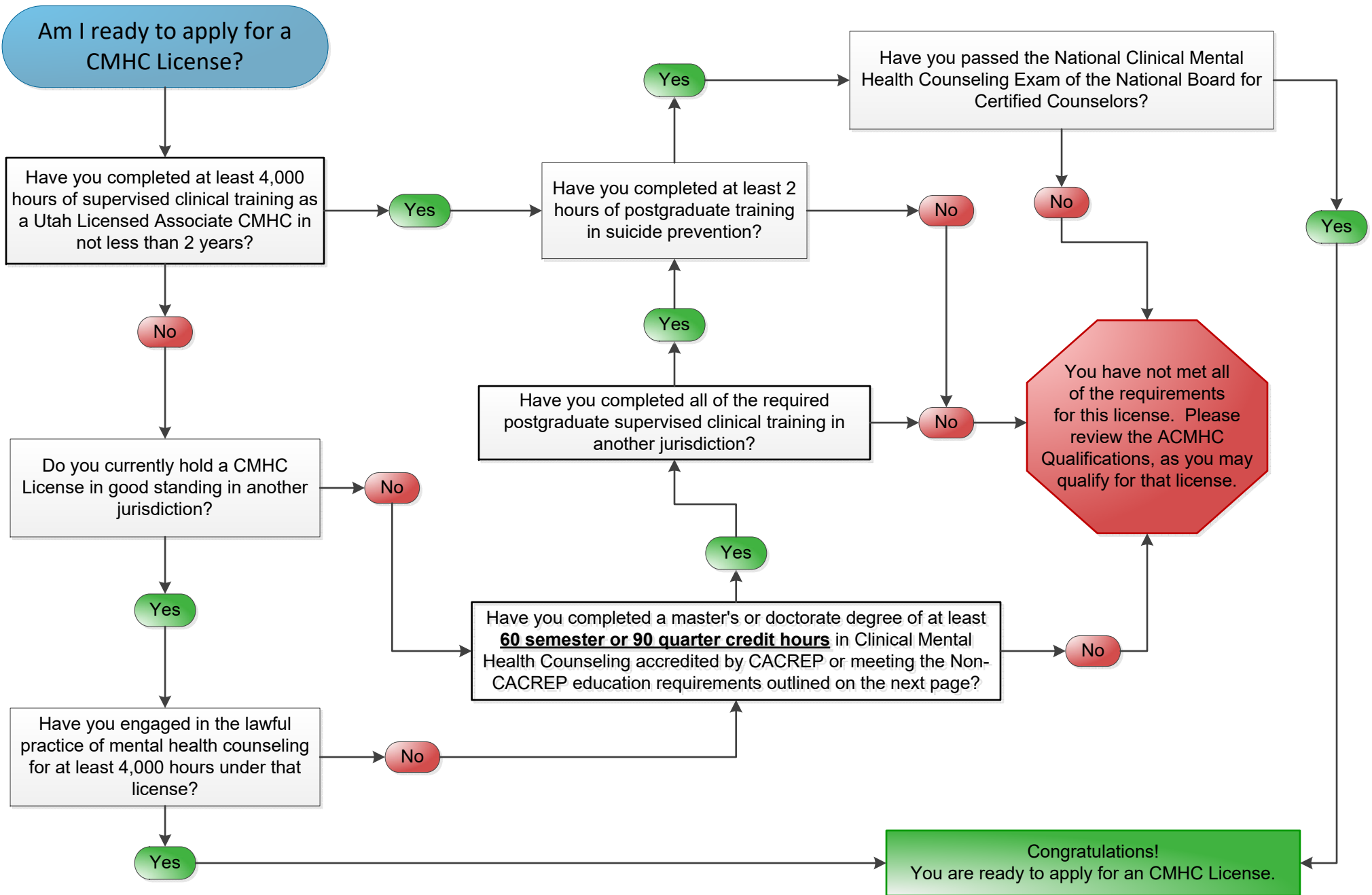


Clinical Mental Health Counselor Pathways



Associate Clinical Mental Health Counselor Non-CACREP Course Requirements

R156-60c-302a allows for a non-CACREP program to qualify an individual for licensure if it is at least 60 semester or 90 quarter credit hours and a master's or doctorate degree is conferred to the applicant in clinical mental health counseling or an equivalent field from a program affiliated with an institution that has accreditation that is recognized by the Council for Higher Education Accreditation (CHEA).

Additionally, the program must include the following graduate level course work:

- (A) a minimum of two semester or three quarter hours in professional counseling orientation and ethical practice based on the standards of the American Counseling Association (ACA), American Mental Health Counselors Association (AMHCA), or National Board of Certified Counselors (NBCC);
- (B) a minimum of two semester or three quarter hours in social and cultural diversity;
- (C) a minimum of two semester or three quarter hours in group counseling and group work;
- (D) a minimum of two semester or three quarter hours in human growth and development;
- (E) a minimum of two semester or three quarter hours in career development;
- (F) a minimum of six semester or eight quarter hours in counseling and helping relationships;
- (G) a minimum of two semester or three quarter hours in substance-related and addictive disorders;
- (H) a minimum of two semester or three quarter hours in assessment and testing;
- (I) a minimum of four semester or six quarter hours in mental status examination and the appraisal of DSM maladaptive and psychopathological behavior;
- (J) a minimum of two semester or three quarter hours in research and program evaluation;
- (K) a minimum of four semester or six quarter hours of internship or practicum as defined in Subsection R156-60c-102(1) or (2) that includes combined completion of at least 1,000 hours of supervised clinical training of which at least 400 hours shall be in providing clinical mental health counseling directly to clients as defined in Subsection 58-60-102(7);and
- (L) a minimum of 34 semester or 52 quarter hours of course work related to the practice of counseling of which no more than six semester or eight quarter hours of credit for thesis, dissertation or project hours shall be counted toward the required hours in this subsection.

An extern license maybe issued to an applicant who holds the required master's or doctoral degree, but is deficient in specific coursework. Allowable deficiencies are defined in R156-60c-102 (1) as:

- (a) no more than a combined total of six semester or nine quarter hours in:
 - (i) group counseling and group work;
 - (ii) human growth and development;
 - (iii) career development;
 - (iv) substance-related and addictive disorders; and
 - (v) research and program evaluation.

Please note that deficiencies do not include internship or practicum hours.